

Quick Reference Guide

Installation of hardware for The Chefs' Warehouse requires multiple accessories in addition to standard GPS tracking. These accessories include, dual temperature sensors, door sensors, and will soon include reefer unit monitoring. This guide will highlight typical information related to each piece of hardware and photos of each item in their installation locations.



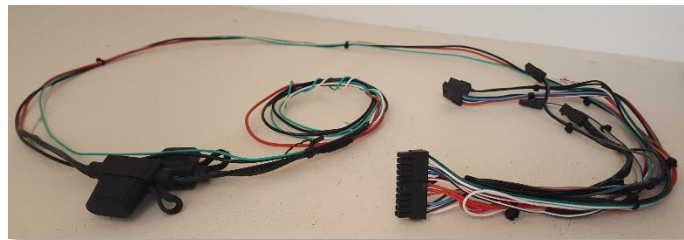
GPS Tracking Device

Our tracking device is mounted as high under the dash, and as close to the windshield, as possible with the barcode side facing towards the sky to capture the GPS signal. This picture shows the unit securely mounted with zip ties where the wiring harness attaches to the unit. Just above the harness you can see the 3 indicator lights. Green for power, red for GPS and green for cellular connectivity. All 3 lights should be illuminated when working correctly.

Wiring Harness

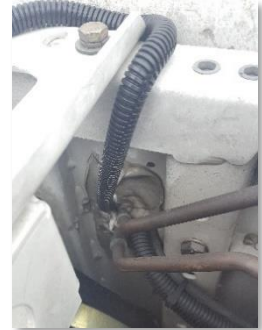
The wiring harness utilized for this installation has multiple connectors to attach the required accessories.

Two inline, 3 AMP, fuses on the constant 12V lead (red wire) and ignition lead (white wire) are incorporated into the harness to protect the vehicle electronics in the event of a failure from our unit, or accessories.



Wire Loom

From our tracking device in the dashboard, wire loom is utilized from the unit, down through a factory access grommet in the passenger floor on most installations. The wires inside this loom run directly to the temperature and door sensors. The loom is run through to the top of the trailer, zip tied every few feet and enter the unit as outlined in the picture to the far right.



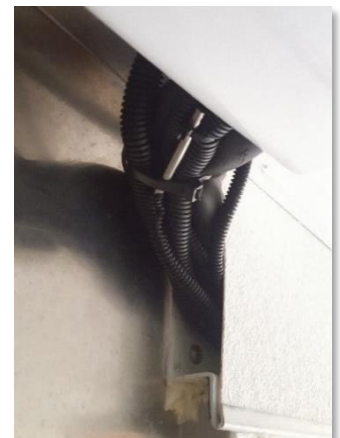
Temperature Sensor

Most trailers have 2 temperature sensors to monitor the freezer and refrigeration portions.



The picture to the left shows the temperature sensor in the freezer portion of the trailer.

The picture to the right shows the temperature sensor in the refrigerated portion of the trailer.



Door Sensor

The picture to the right shows the full door sensor solution utilized for The Chefs' Warehouse.



The picture below to the left shows the sensor that mounts directly to the rolling door on the trailer. The picture below to the right shows the sensor in its mounted position inside the trailer next to the track.



NOTE: As fleet vehicles differ by make/model etc., installation variances such as tracking unit/sensor locations are to be expected from vehicle to vehicle.